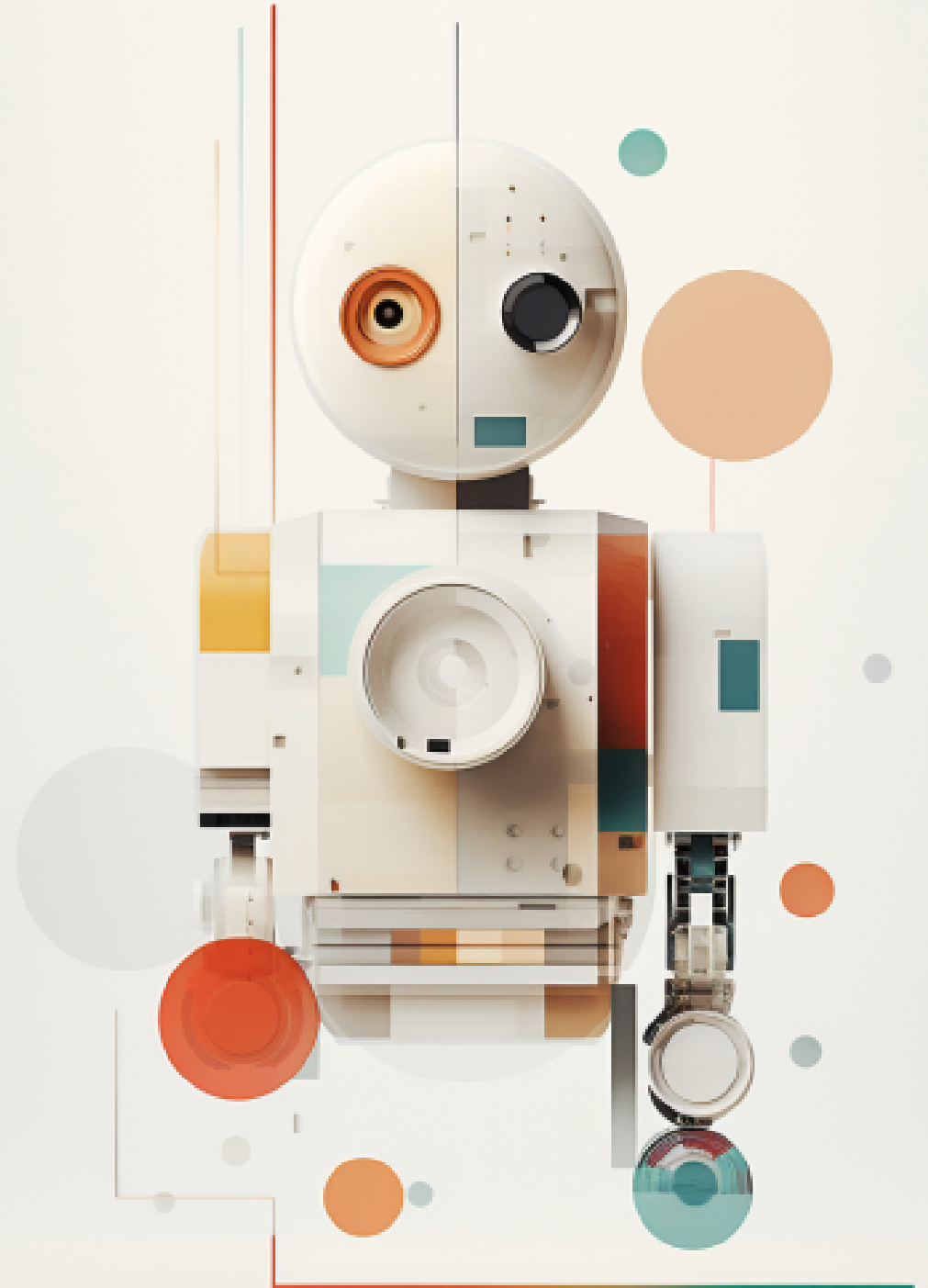


**Learnmonade**

# **Make Your Own Model Chatbots With AI**

**2 Must-Have Apps**



Click on the logo to navigate to the app.

# character.ai

Ever wanted to know how a certain celebrity would reply to your queries?

**Enter Character AI, the platform that allows you to create unique "characters," each imbued with distinct personalities and behaviors.**

Each character functions as a chatbot, capable of generating human-like text responses and participating in contextual conversations.

As Character AI continues to grow and refine its technology, the possibilities are practically endless.



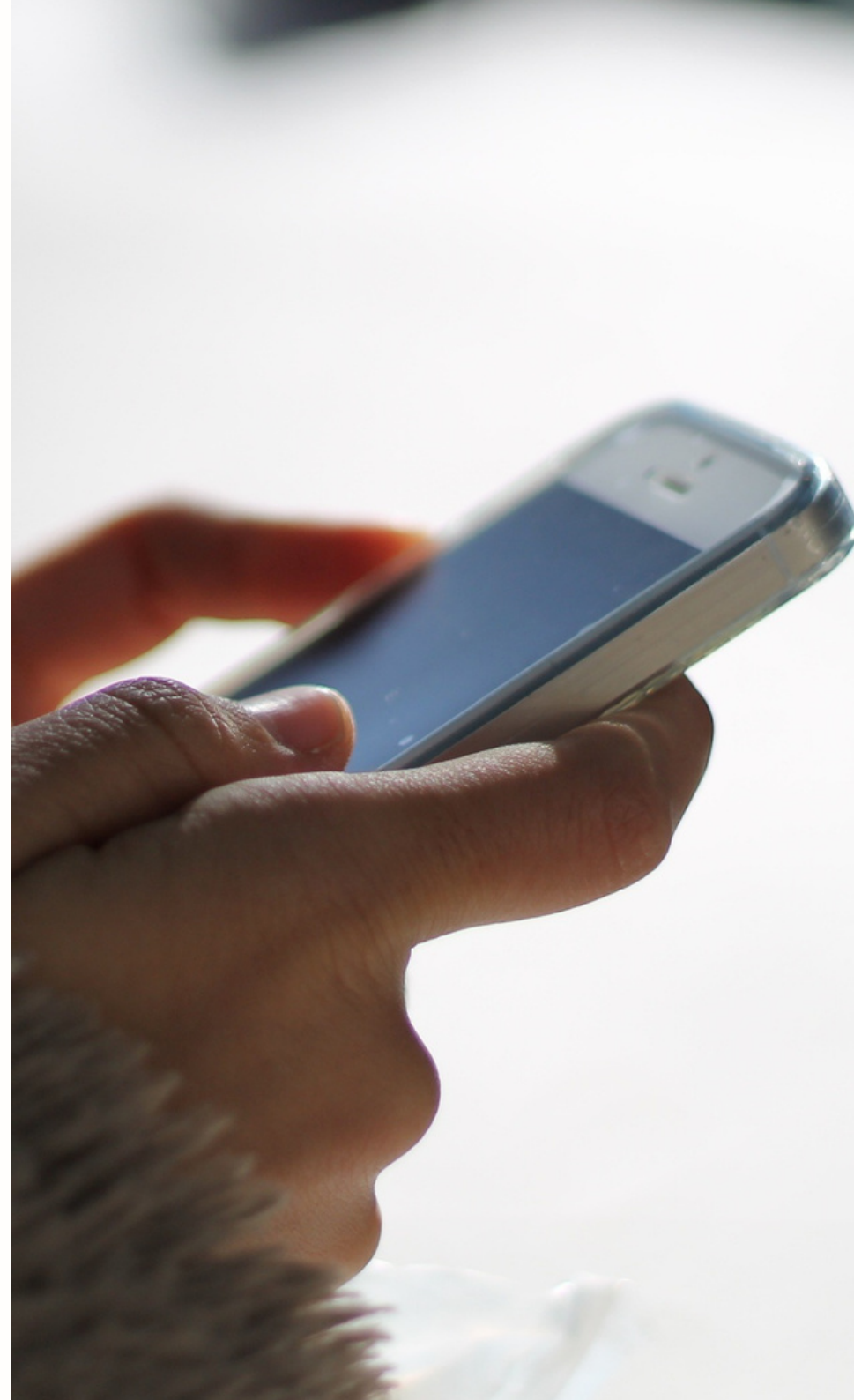
Click on the logo to navigate to the app.

## character.ai

Here are some of Character AI's features:

- **Conversational ability:** It can understand natural language inputs and respond in a conversational manner, creating a more engaging and human-like interaction.
- **Personalization capabilities:** Character AI can deliver personalized experiences to users by analyzing their historical interactions and preferences.
- **Emotional intelligence:** Some Character AI systems incorporate emotional intelligence, enabling them to recognize and respond to human emotions.

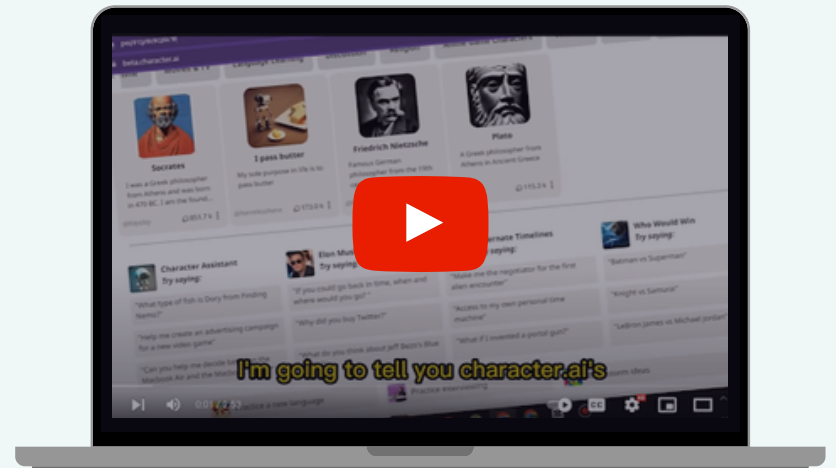
Give Character AI a go and discover what it can do for you.



Click on the logo to navigate to the app.

**character.ai**

**Here is a video of character.ai and its' many tips and tricks.**



Click on the image to view the video.



Click on the logo to navigate to the app.

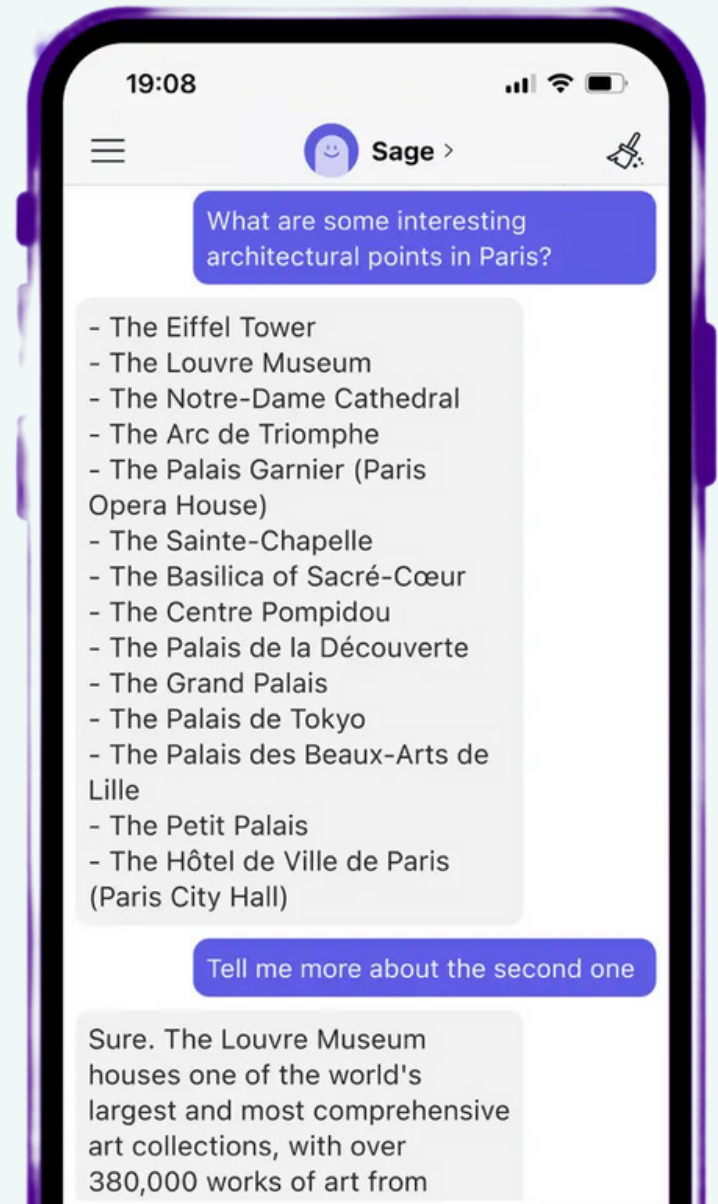


Are you feeling tired of using the same AI Chatbots for generating content?

## Well, Poe AI is here with multiple powerful and user-created Chatbots.

It is a Quora app that provides an interface for communicating with a range of chatbots.

Beyond merely chatting, it allows you to create prompts for generating essays, cracking jokes, or extracting information on a wide array of subjects.



Click on the logo to navigate to the app.



Here are some of the features of Poe.ai:

- **Speed and accuracy:** You can navigate an intuitive, user-friendly interface to access a diverse range of chatbots.
- **Sync across platforms:** Forget about losing your place mid-conversation. Poe AI ensures continuity by synchronizing your chats across different devices.
- **Linkification:** Poe.ai features clickable links, which allows you to instantly dive deeper for more information.
- **Bot creation:** You can now create your own AI chatbots on the basis of the existing ones using text prompts.

Check out [this June newsletter](#) by the Center for Education Innovation and how they created their own Poe chatbot.

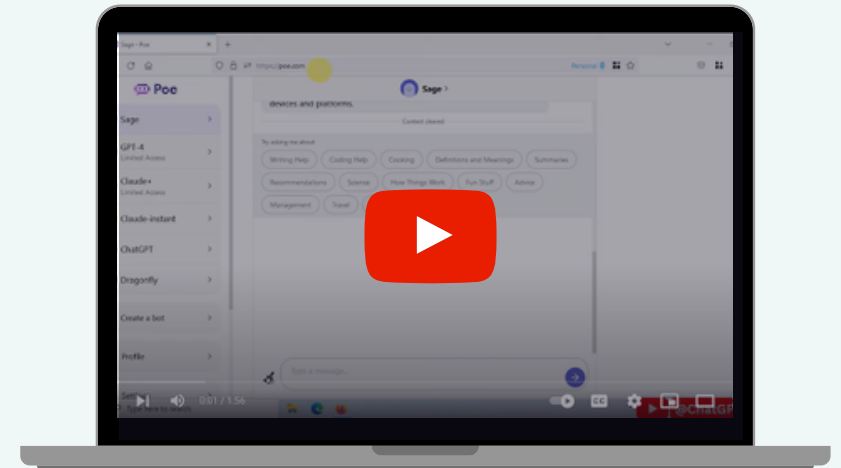
Take Poe.ai for a spin now!



Click on the logo to navigate to the app.



**Here is a video of poe.ai and its' new features, as well as what it is.**



Click on the image to view the video.



# Pricing

character.ai



Free Plan



Pro Plan Trial



Pro Plan

\$9.99USD/mo

\$17USD/mo





**To know more about using AI for learning and development, contact us.**

 [ivy.shi@learnmonade.com](mailto:ivy.shi@learnmonade.com)

 +852 53002718

**Learnmonade**

**We make bespoke e-learning courses tailored to your needs.**



Scan this QR code to learn more about us.

 [Click here to learn more](#)